



AN ICON OF WORLD
TRENDS & FASHION



ABOUT US :



"ALFA FASHION" as a dynamic company with long term roots in different fields of the apparel industry since 2002. With the trust of our customers, with the strength of our capabilities and with a strong business concept, "ALFA FASHION" has today grown into a global sourcing organization and one stop solution in the areas of apparel sector. The main objective of ALFA FASHION is to provide quality work without compromise. In order to achieve our goals, we're equipped with adequate logistics and staff. We believe that due to our experience, knowledge, training and hard labor we can offer our clients an unmatched service which is cost effective and adherent to international quality standard. Make quality a habit at all levels of staff and production units. Continuous monitoring all employees in order to upgrade our services to client. A continuous market research in Asia for, fabrics, yarns and accessories. As per buyers request we work closely with institutes like SGS, ITS, HOHENSTEIN. We guide factories in order to achieve compliances. Whole staff is responsible to achieve in time deliveries. Interactive communication between all offices in order to support all customer requirements. Strong QC, QA department following international standards such as AQL 1.5, 2.5 ALFA FASHION is committed to fulfill the reliability that buyer needs, the attention and services that buyers deserve and quality garments as per client's expectation.

Overview:



ALFA-FASHION (BD) We are merchandising all kinds of apparel of natural and manmade fibers mainly of **SWEATER/KNIT/WOVEN/DENIM/PADDING JACKET/TWILL PANT/UNDER GRAMENT/HAND MADE** products per year more particulars as follows:

- **Knit** : Single Jersey, Piqué, Lacoste, Feeder stripes (PK &S/J), Drop needle, Lycra rib & s/j, Terry, Interlock, Rib 1x1, Rib 2x2. - 5 Partner factories including 3 composite units - Total 50 lines with a capacity of 7,00,000 pcs basics / 5,00,000 pcs fancy items per month .
- **Woven** : Boys and girls denim pant, Chino, Trousers, dress, Padding jacket, Outwear, shorts, skirts, tunic, Leggings, Nightwear, Shirts, TOPS, Jacket, Men's and Ladies shirt, CVC jacket, Polar Fleece Jacket, Taffeta jacket, Men's Pant, Ladies Pant. Fabric range: All kinds of fabric like denim, Twill, Canvas, CVC fleece, Micro Polar fleece, Polyester Talon PVC coating, Poplin, 100% Cotton Y/D, And all kinds of imported fabric we do. 4 Partner factories with updated machines and in house washing plant .
- **Sweaters and Pullovers** : Single Jersey, All kinds of ribs, Pointelle, Milano, Cables, Diamonds, Shaker, Pineapple in any kinds of yarn like 100% Acrylic, 100% Cotton, 100% Acrylic cashmere like, 100% Acrylic mohair like, 50% Cotton 50% Acrylic, 70% Viscose 30% Nylon, 70% Cotton 30% Nylon, 80% Viscose 18% Nylon 2% Elastane, 80% Cotton 18% Nylon 2% Elastane and any sort of BLENDED imported yarn as per customer requirement. - 5 Partner factories with updated automated machines.

About Quality Control team:



- We deploy one Quality Assurance Inspector for Factory who visits factory on regular and full time basis in order to ensure Development, Sampling, Production Follow Up, CSR Checking, Confirming required quality standards. We make a first sample and send it to customer to check the Workmanship and according to First sample comment we make each color sample by using actual accessories and send to customer to avoid any mistake in Bulk Production. Every Saturday we have a weekly meeting to check the status of the each order and every Monday we do TV conference with Customers to update them. "No compromise with the Quality AT ALL".

Quality is our High priority :

Our Quality Policy:

Now a day it is very important to have a good quality policy in every sector specially for garments sector it's must. We have our own strong quality policy and besides we also follow buyer's quality policy. We trust in Continuous improvement of Productivity, Quality, Service, Relationship and Human Resource to achieve Total customer satisfaction.

1. Analysis
2. Production check list
3. Fabric inspection
4. Pre - Production Check (PPC)
5. During Production Check (DUPRO)
6. Pre – Final Inspection
7. Final Random Inspection (FRI)



Our Mission:



Our Mission is a power house of design innovation of product development and production expertise. Our core values are honesty, integrity and a credo of environmental respect and corporate social responsibility and our vision is to be our customer's first choice of supplier and business partner. Alfa Fashion is a leading government approved Buying house in Bangladesh. Alfa Fashion is the exporter of various Textile and Textile products. Textile products cover all type of Men's, Women's and Children's outer and inner wears. We are always determined following three main mottos: 1) Better quality goods. 2) Competitive price. 3) Faster delivery (which means delivery with shortage time).

We love to offer :

**WE WOULD
LIKE TO
OFFER**

- ✔ Value Added Product Sourcing.
 - ✔ Integrated Supply Chain
 - ✔ Mutually Beneficial Fair Business Trade
 - ✔ Result Oriented Team
 - ✔ Required And Acceptable Quality Product.
 - ✔ Unbeatable Price For Fashion Trend.
 - ✔ Timely Delivery Of The Product.
 - ✔ Sourcing Knowledge.
- A. Selection of right fabrics and accessories sources at Competitive price.
- B. Selection of right garment manufacturing plants.
- C. Capacity management system.
- product knowledge.
 - a young professional merchandising team under direct Supervision of the management.
 - skilled quality assurance team.
 - well aware of chemical and physical restrictions.
 - regular update on market information and competitor activities.
 - standard working atmosphere in a convenient location, with good Infrastructure.

What we believe on :

Core Values

Our Customer: We put our customers at the forefront recognizing & respecting their values; with a view to always meet their requirements and making their sourcing a valuable one.

Personnel: We commit ourselves to ensure that our people grow within the business. We believe in their loyalty, team spirit and legitimate aspirations for always being successful.

Leadership: We demonstrate decisive leadership and fast management reaction to secure maximum advantages of changes.

Responsibility: We recognize and always honor the investment of our customers, as well as our ethical and social responsibilities. We respect our environment and its protection. We compete on quality, service and value. We build our competitive edge on superior innovation and customer responsiveness.

Excellence: We compete on quality, service and value. We build our competitive edge on superior innovation and customer responsiveness. We have a passion for excellence and our intention is to simply be the best.

Exiting Key Customers:



ZARA



MATALAN



yamamay



DKNY



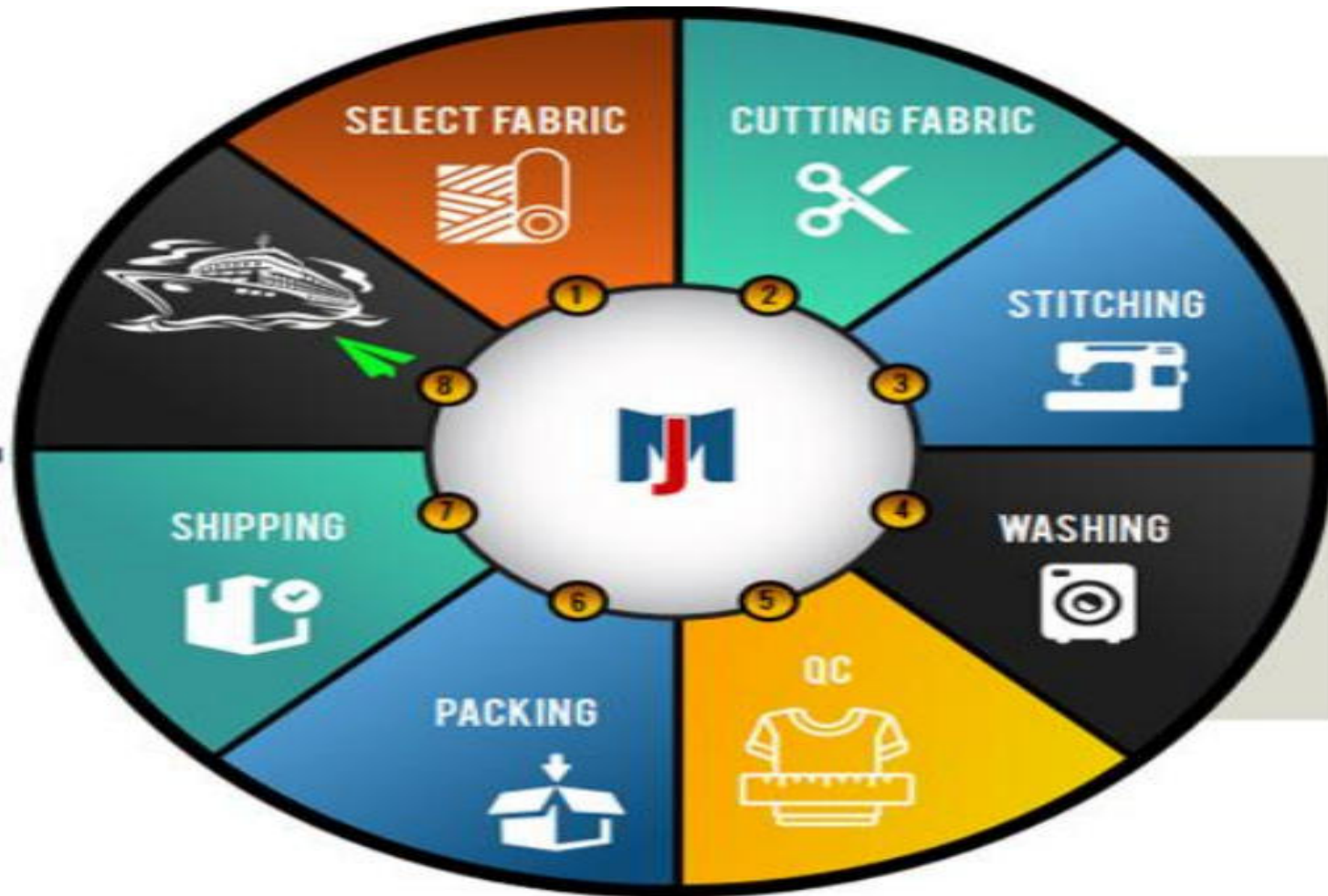
joules

XR
XRAY



CASTRO

Way to follow up work & action :



Our product category:



=> **K**NIT

=> **S**WEATER / PULLOVER

=> **S**PORTS WEAR

=> **W**ORK WEAR

=> **H**OME TEXTILE

=> **H**ANDI CRAFT

=> **W**OVEN (TOP AND BOTTOM)

=> **D**enim / Twill Long-short pant.

=> **O**UTEWEAR

=> **L**INGERIE

=> **A**CCESORIES (BAG, SHOES , CAP ETC).

QUALITY NEVER GOES OUT OF SYTYE



Picture of our products:

Knit items (All Type) :







Denim Items (All Type) :



Activate Windows



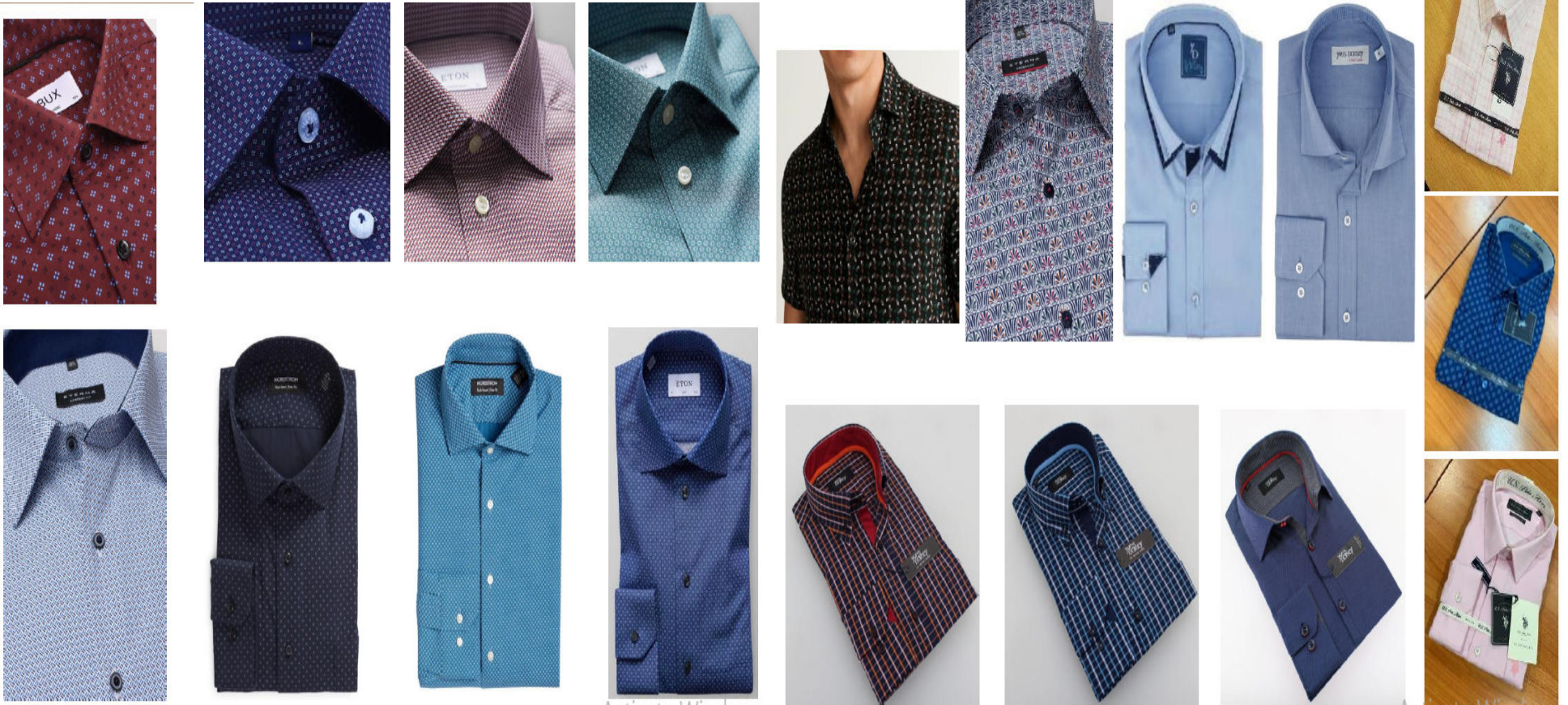
Activate Windows

Denim Jacket (All Type) :



Activate Windows
Go to Settings to activate Windows

Woven shirt Item :



Activate Windows

Activate Windows

WOMAN COLLECTION :

Women's Denim

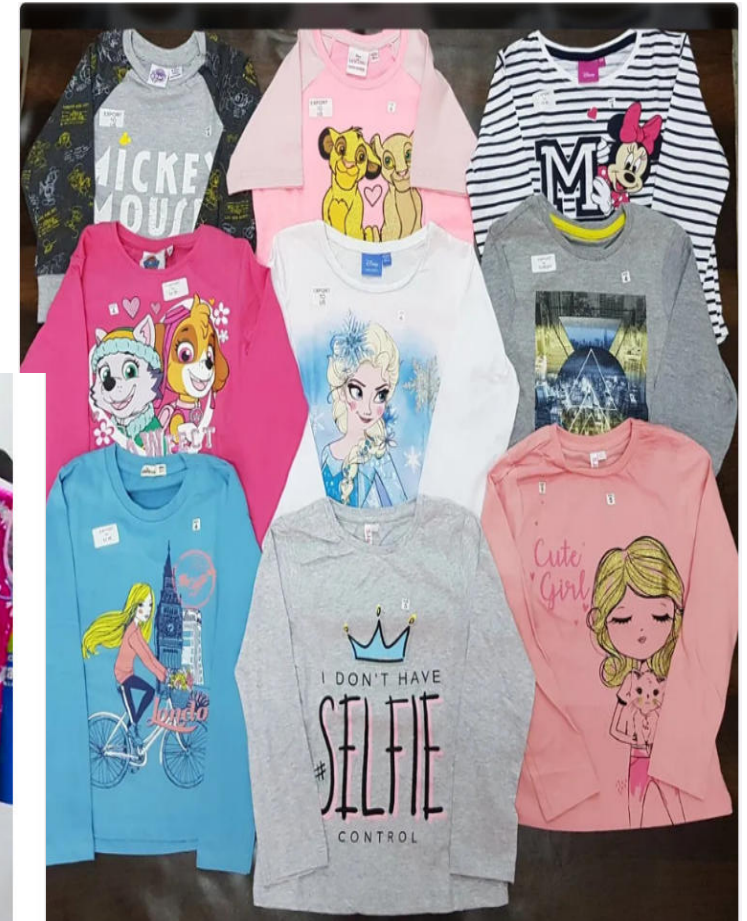
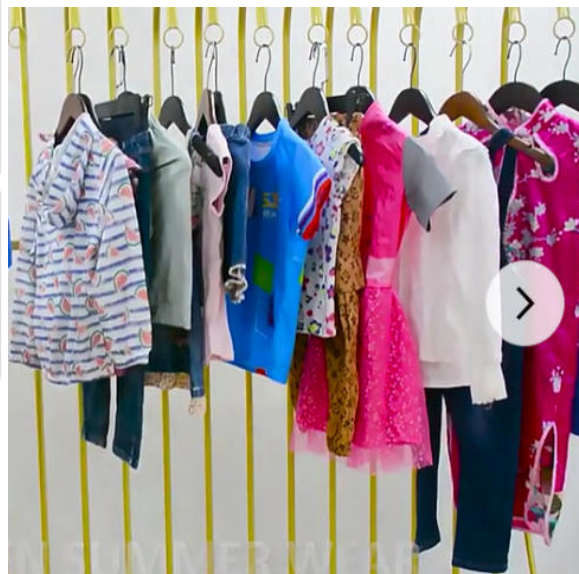
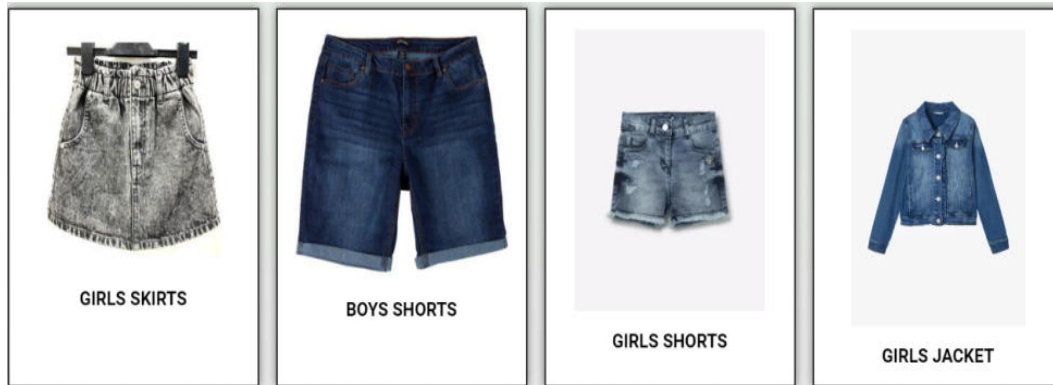


Women's



Kids collection :

ALFA
Fashion
WWW.ALFAFASHIONBD.COM



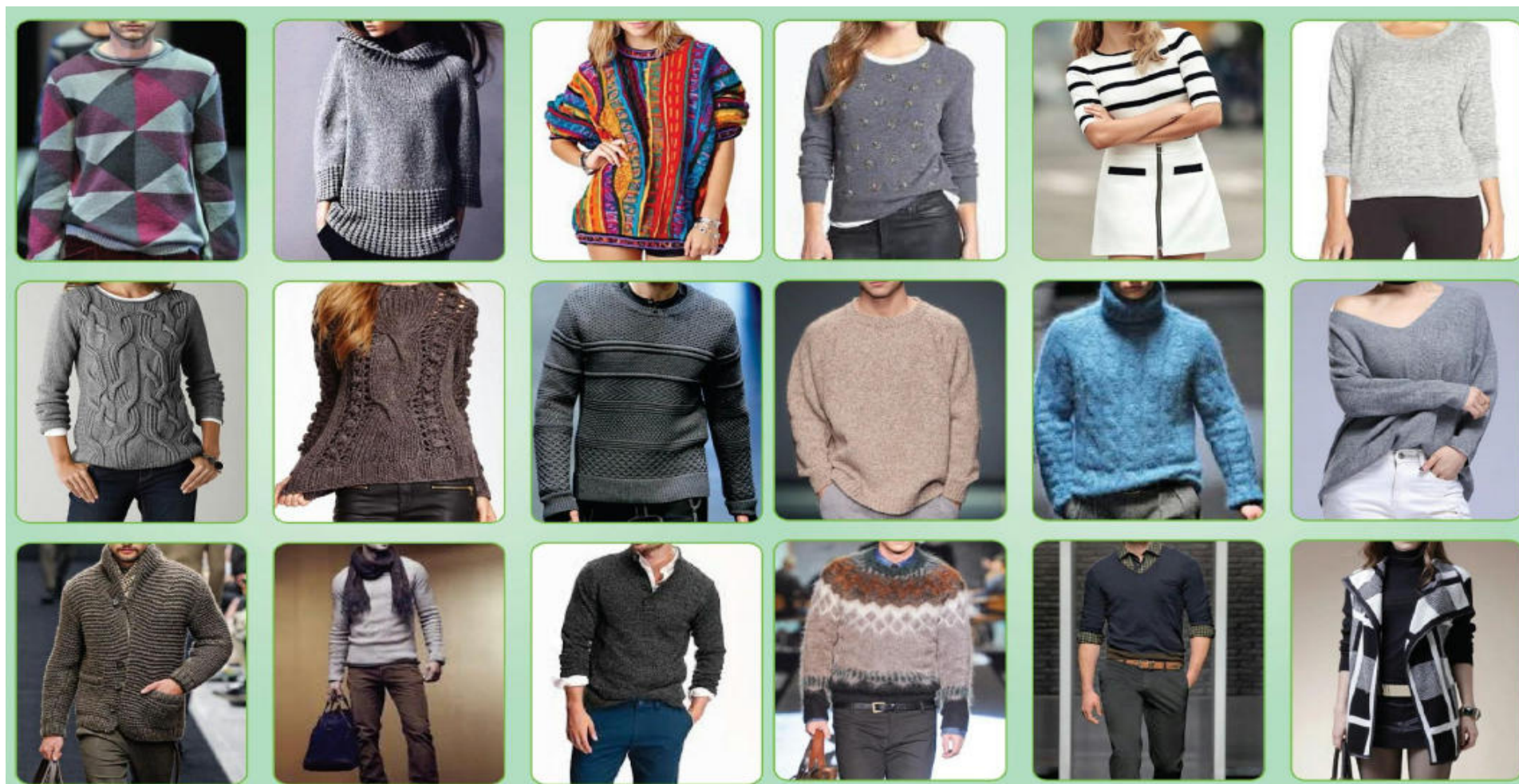
Woven bottoms :



Bottoms



Sweater (All Type):



Sweater (All Type):



Sweater
Product

Sportswear :



Chino Long Pant



Cargo Short Pant



Outer wear :



Down and padding jacket :

ALFA
Fashion
WWW.ALFAFASHIONBD.COM



Down and padding jacket :

ALFA
Fashion
WWW.ALFAFASHIONBD.COM



JACKETS

Work wear :



Lingerie :



Nightwear and Loungewear:



CAP Items:



Hand made Rug/Carpet/Jute/Sea Grass/Banana/Water Hyacinth

Handmade Rug/Carpets:

Material: 100% Jute

Size: Custom size as per client requirement.



Handloom Rugs:

Material: Solid Garment waste

Size: Custom size available up to 120 cm width



Placemat:

Material: Jute/ Seagrass/Water hyacinth/Banana

Size: Custom size as per client requirement.



Baskets:

Material: Jute/Seagrass/Water Hyacinth/Banana

Size: Custom Size as per client requirement



Our partner factories:



Our partner factories:



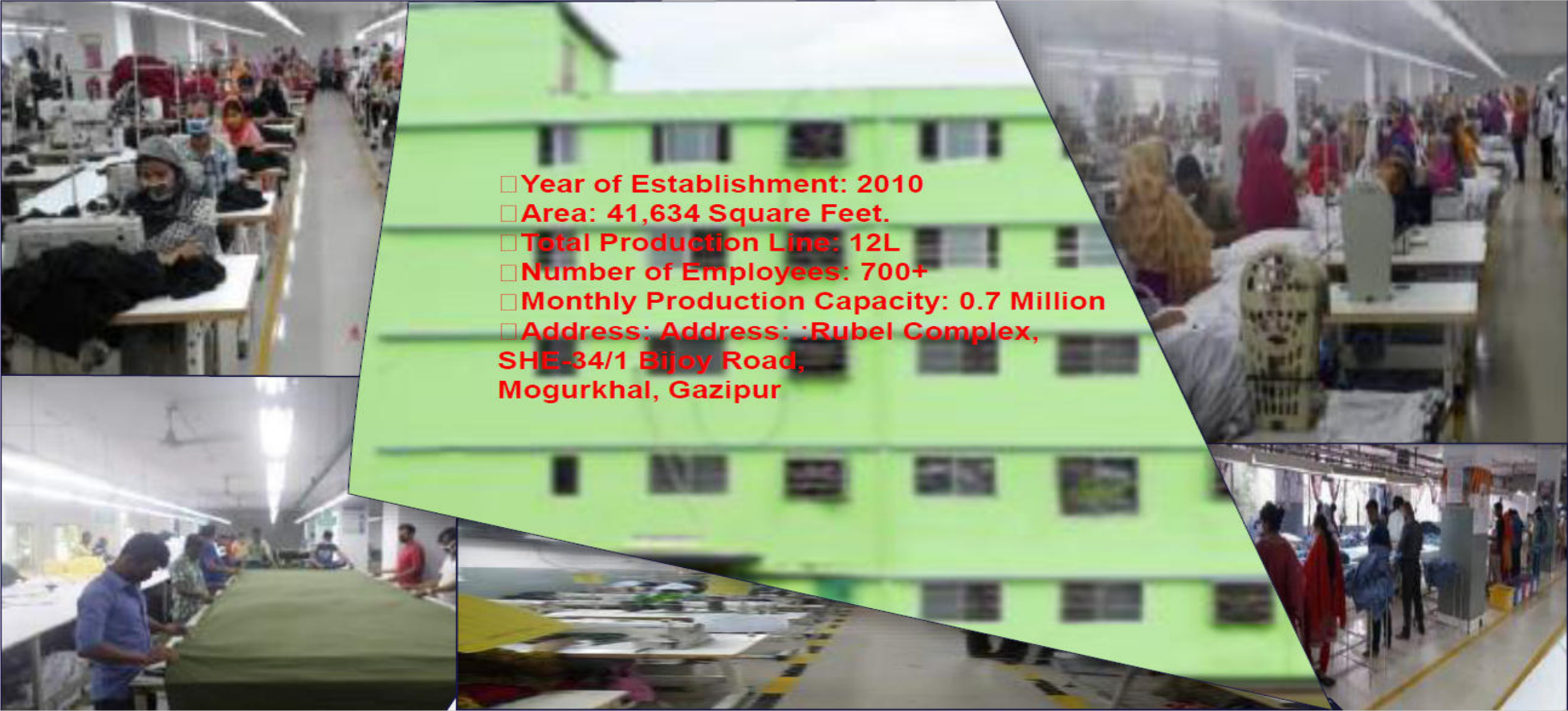
Our partner factories:



Our partner factories:



Our partner factories:

- 
- Year of Establishment: 2010
 - Area: 41,634 Square Feet.
 - Total Production Line: 12L
 - Number of Employees: 700+
 - Monthly Production Capacity: 0.7 Million
 - Address: Address: :Rubel Complex,
SHE-34/1 Bijoy Road,
Mogurkhal, Gazipur

Our partner factories:



Our partner factories:

**CARTON UNIT:
EXPO CARTONS LTD.**



**YARN DYEING UNIT:
MNS YARN DYEING
INDUSTRIES LTD**



**EMBROIDERY UNIT:
S & A CORPORATION**



**LAB UNIT:
TNZ LAB EXPART**



You can reach us here 24/7

Whatsapp : 008801713257213


Contact us:

BANGLADESH OFFICE:

Raj Ahmad

Managing Director

 raj@alfafashionbd.com

 Call: +8801713257213

Website: www.alfafashionbd.com

Corporate office :


Alfa Fashion ® House : 25 (2nd Floor) ,Road :
02, Sector : 11, Uttara Model Town, Dhaka-
1230, Bangladesh.

KOREA REGION OFFICE:

Attn: Md. Iqbal Bhuyan (익발)

Director of Korea Region

 iqbal@alfafashionbd.com

 Call: +821027680102

Website: www.alfafashionbd.com

Korea Region office :

101 Mangmibeonyeong-ro 24beon-gil,
Suyeong-gu, Busan 48242,
Republic of Korea